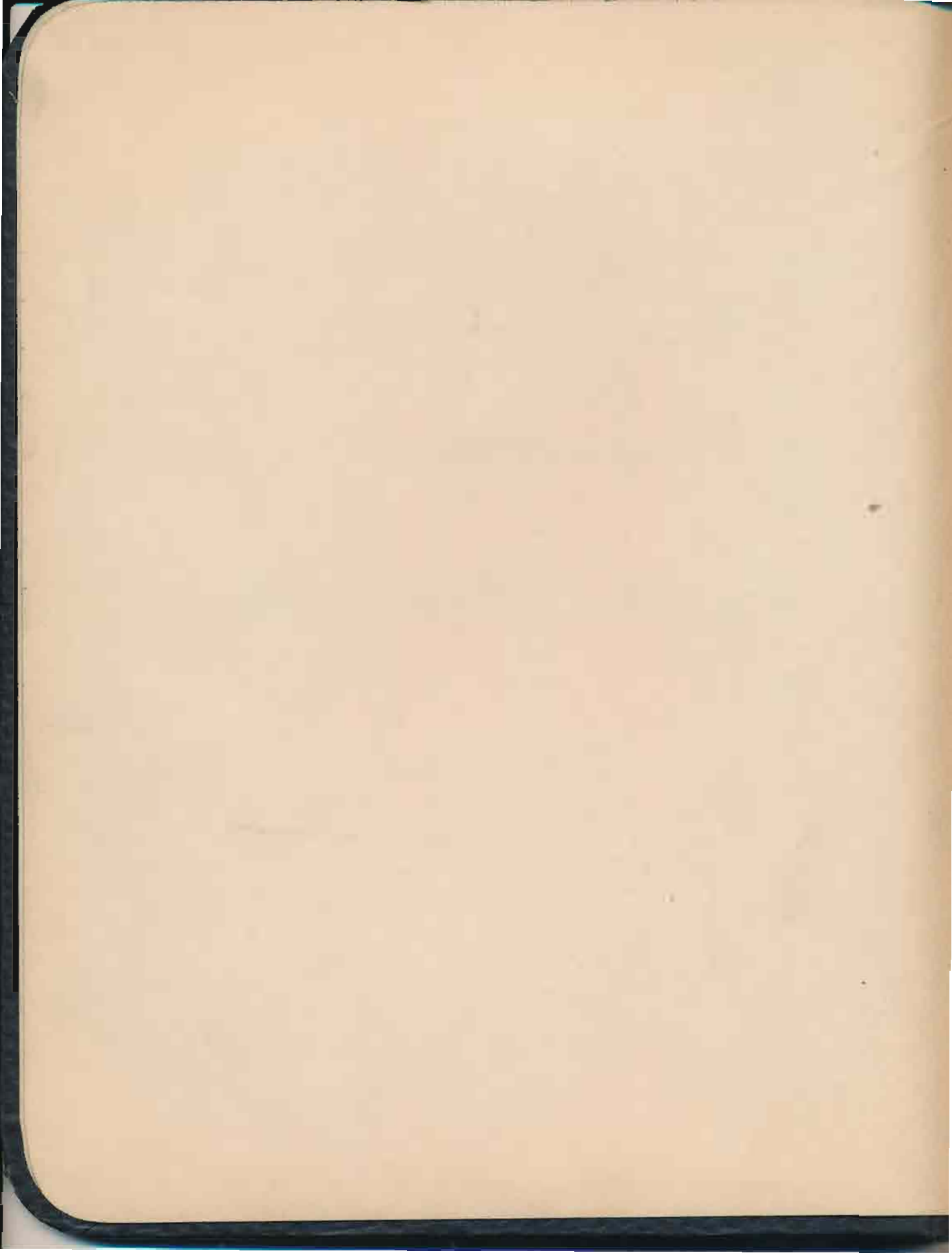


Department of
Paleontology.

Natural History Society
of
Maryland



Officers.

Year - 1933 - 34.

Ella M. Palmer, Curator.

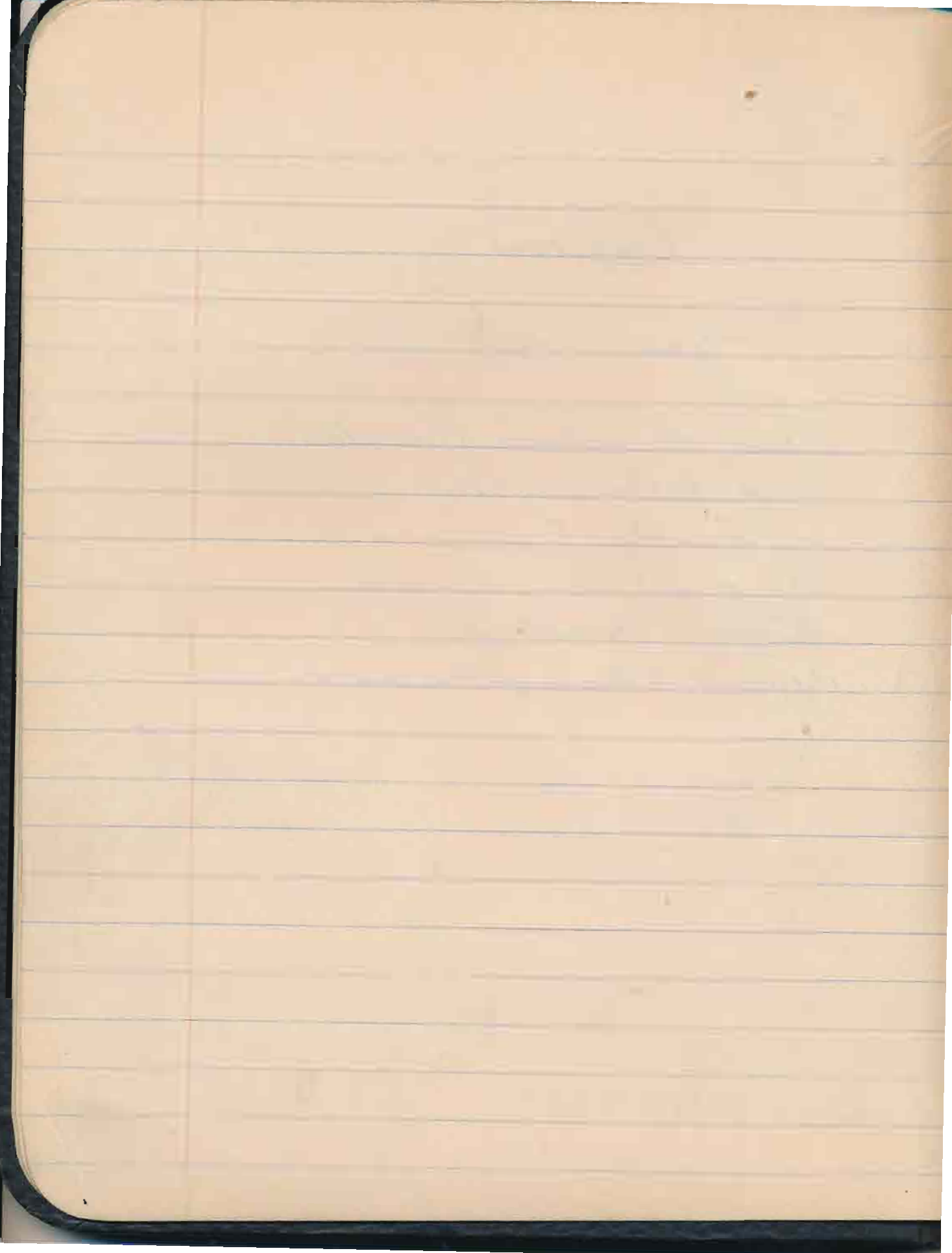
John B. Calder, Asst. " "

A. Stewellyn Jones " " "

Benj. A. Calder, Associate "

Roger S. Hecklinger " " "

Edmund B. Fladung, President Ex-Officio.



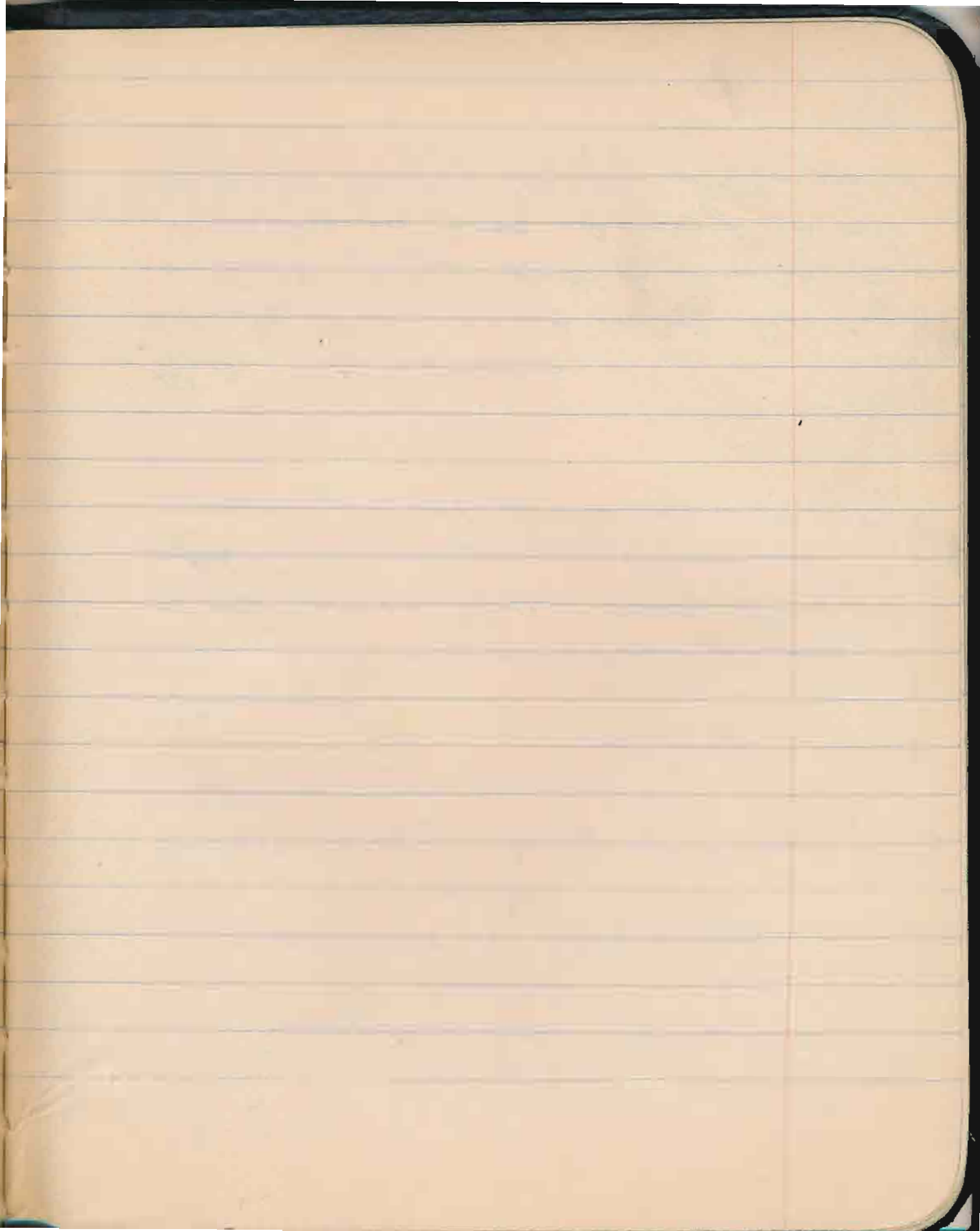
Rules for the
Organization and Management
of the
Department of Paleontology
of the
Natural History Society of Maryland

Introduction:

The Department of Paleontology
of the Natural History Society of Maryland
shall be organized and managed
according to the following rules.

Rule 1. Memberships

Memberships in the Department
of Paleontology shall be limited to
members in good standing in the
Natural History Society of Maryland



Rule 2. Meetings

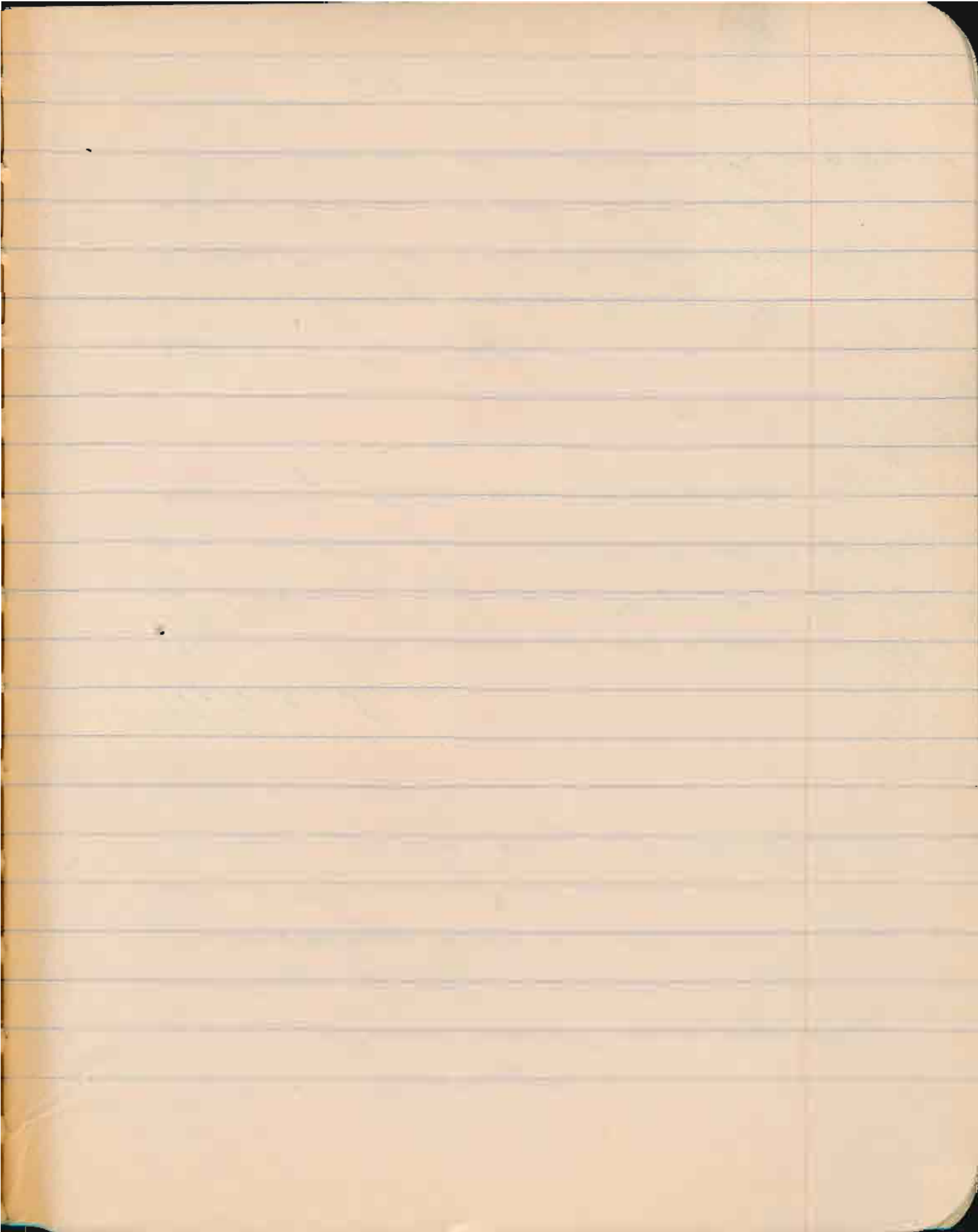
There shall be a regular meeting of the Department of Paleontology held on the first and third Monday of each month in the laboratory of the Department.

Rule 3. Dues

The dues of the Department of Paleontology shall be ten cents per month payable at the regular monthly business meeting.

Rule 4. Voting

Every member of the Department shall have a vote in the election to the Board of Governors of two associate curators.



Rule 5. Quorum

Two-thirds of the membership of the Department shall constitute a quorum.

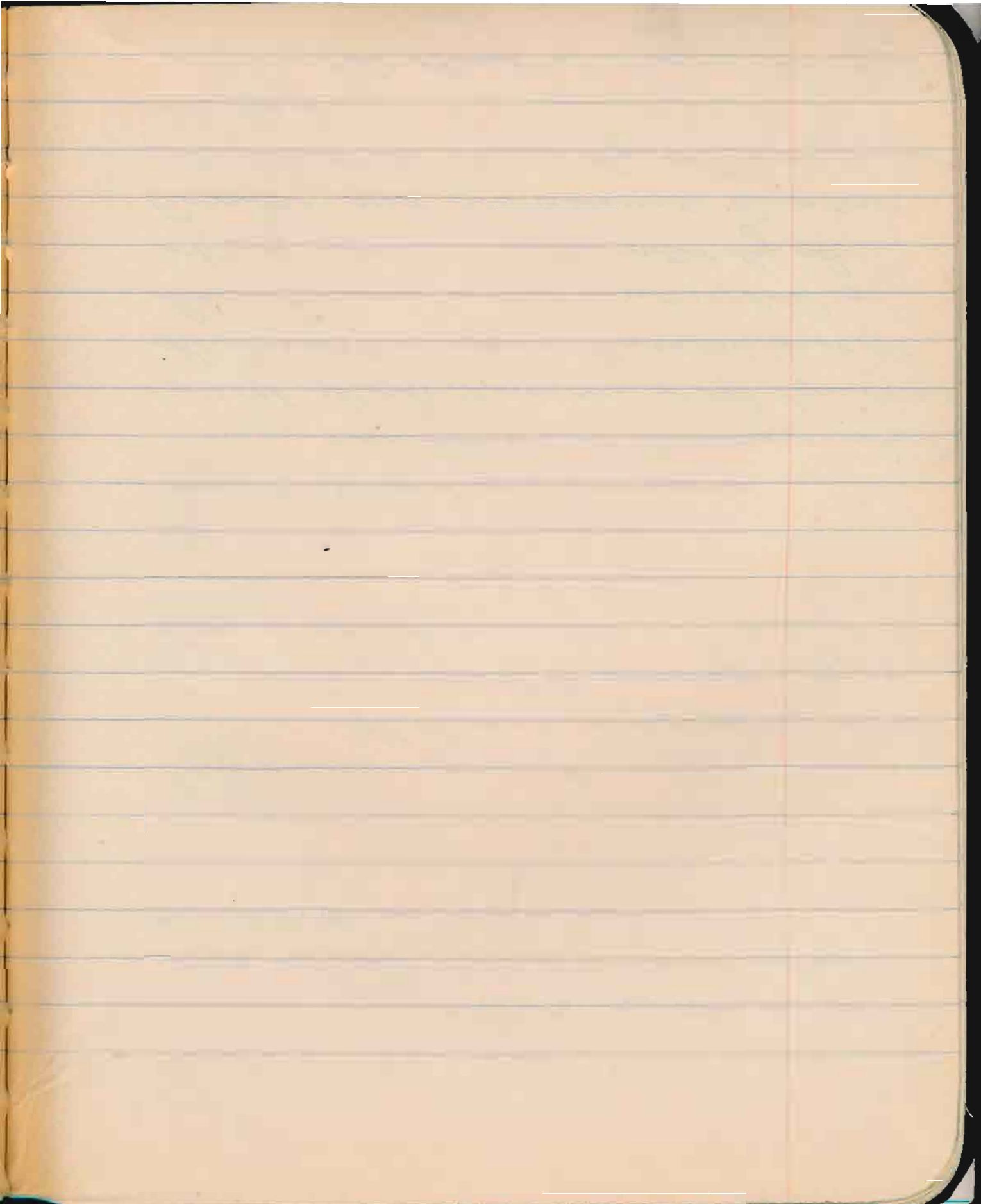
Rule 6. Management

All business and property of the Department shall be managed by a Board of Governors.

Rule 7. Board of Governors

The Board of Governors shall consist of the Curator of the Department, the First Assistant Curator and the Second Assistant Curator, both of whom shall be appointed by the Curator; and two Associate Curators who shall be elected by the Department at large.

The Board of Governors shall



serve for a period of one year.

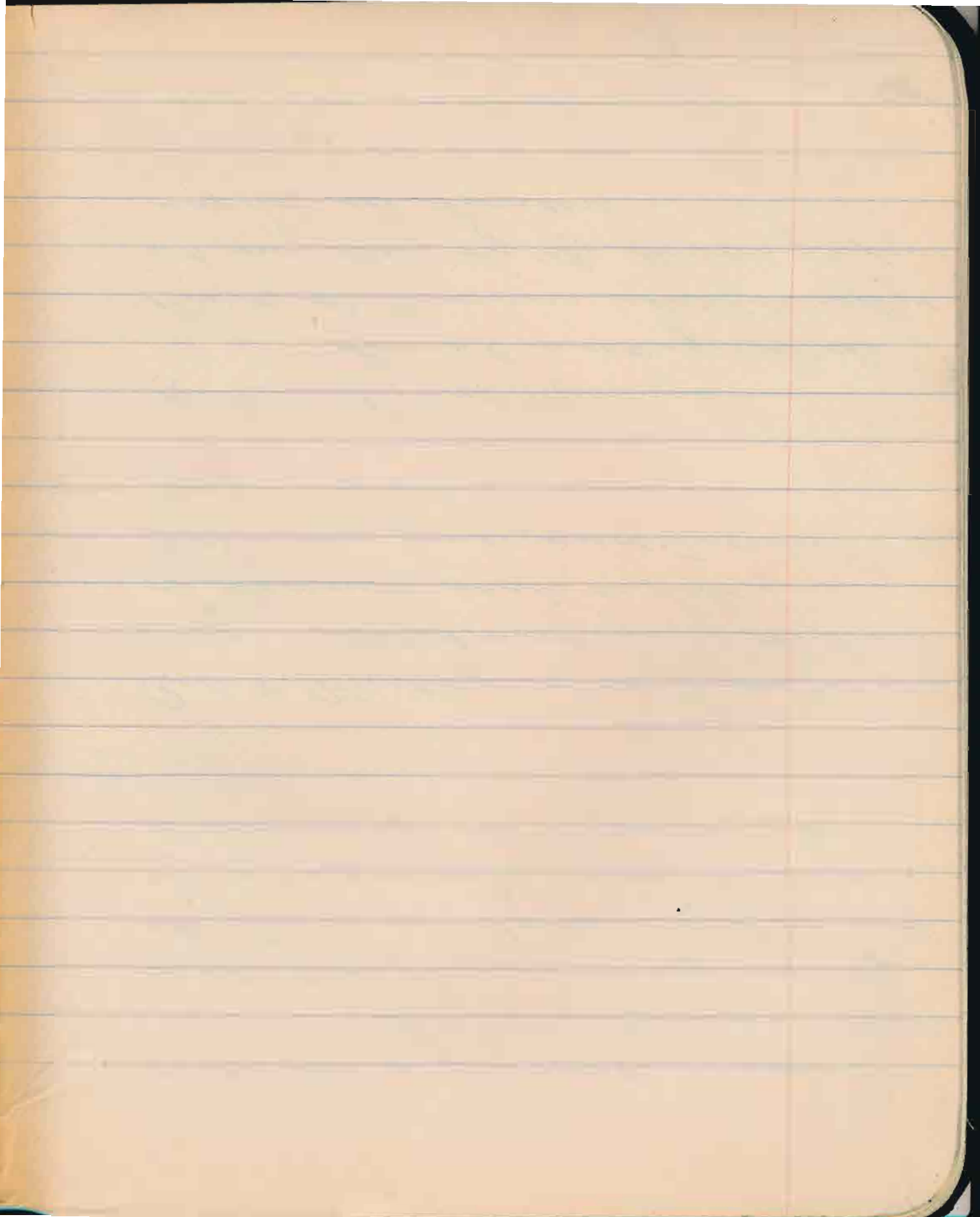
A Secretary-Treasurer shall be elected from among and by the Board of Governors to handle the correspondence, minutes and finances of the Department.

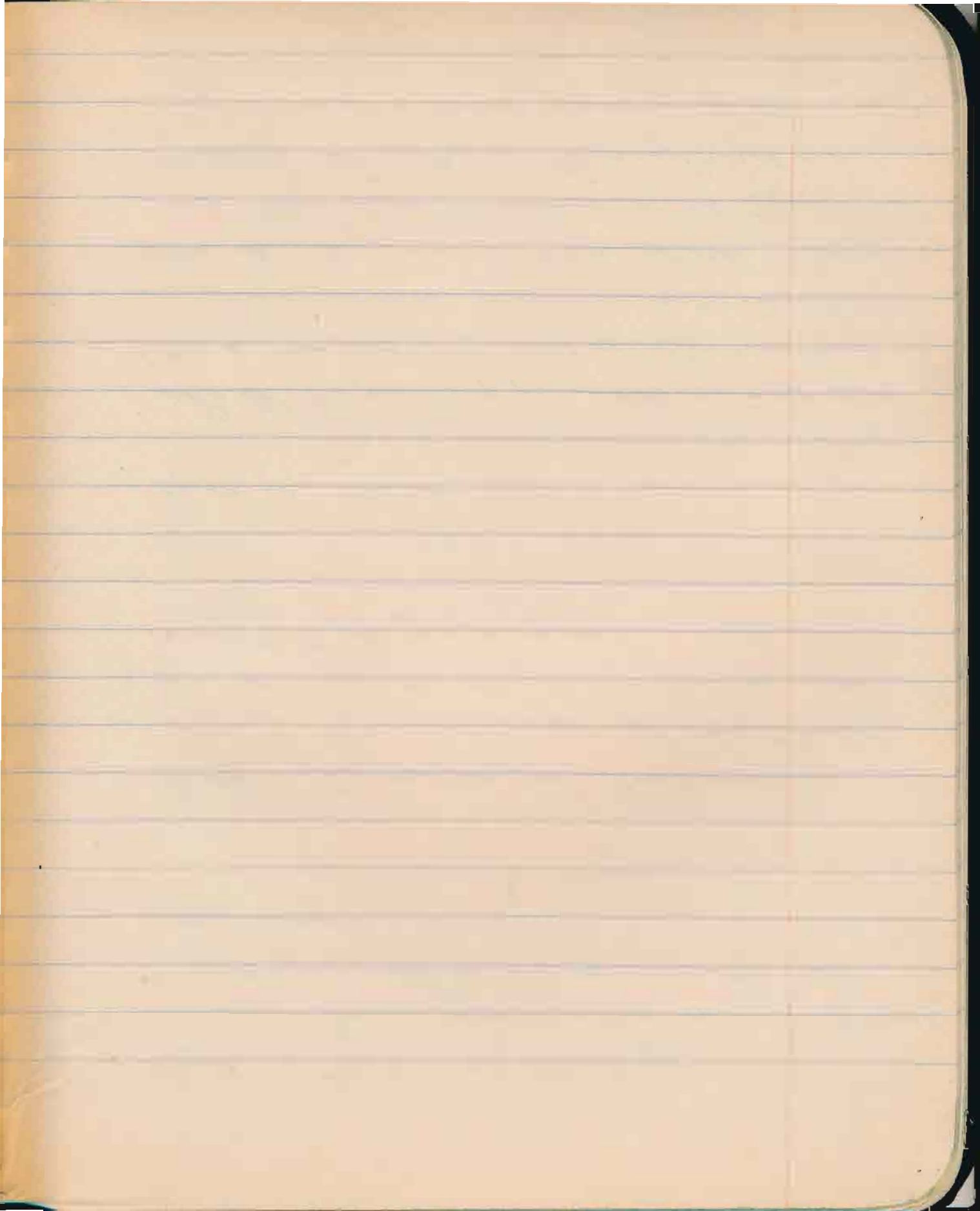
Rule 8. Meetings of the Board of Governors

Stated meetings of the Board of Governors shall be held in February, June and October.

Rule 9. Special Meetings

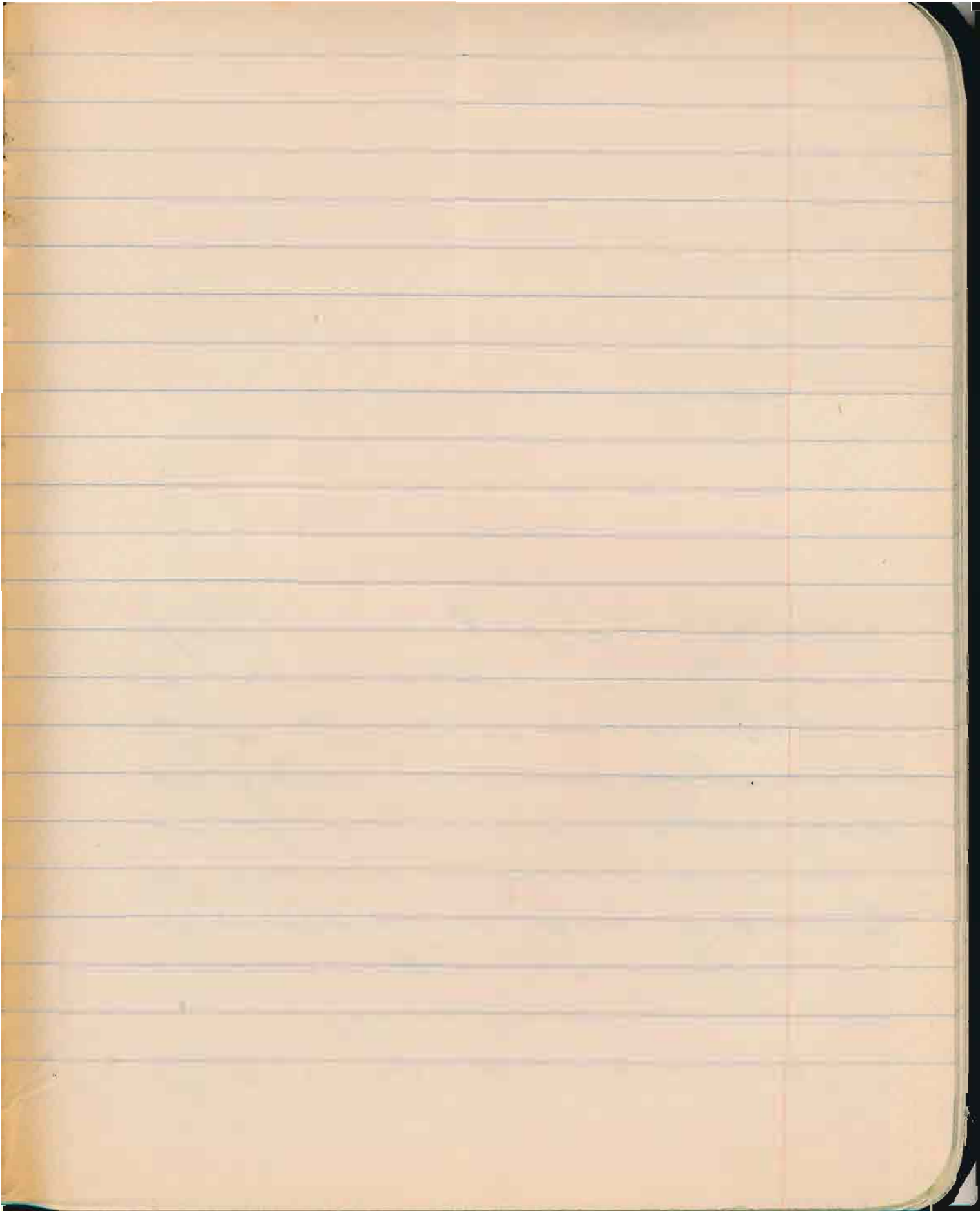
Special meetings of the Board of Governors shall be called at any time by the Secretary upon order of the Curator.





Rule 13. Amendments to Rules

The rules of organization and management may be amended from time to time by the Board of Governors providing for the care and management of the Department and the government of its affairs at any meeting of the Board of Governors by a vote of the majority of those present.



Minutes

The Department of Paleontology
of the Natural History Society of
Maryland was created by the
Board of Trustees on July 20, 1933.
Ebra M. Palmer was notified of his
appointment to the curatorship on
July 25, 1933. by Mr. E. B. Filadung,
President of the Natural History
Society of Maryland.

September 17, 1933.

The first meeting of the Department of Paleontology was called at the home of the Curator on Monday evening, September 17, 1933. The following members of the Department were present: Ezra M. Palmer, Curator; John B. Calder, Assistant Curator; A. L. Jones, Assistant Curator; Roger Hecklinger and Benj. A. Calder, Associate Curators.

The Curator requested Mr. J. B. Calder to prepare a fifteen minute talk outlining the aims and functions of the Department. This talk is to be presented before the Society at one of the regular meetings. The next order of business was a suggestion for the organization of the Department. Mr. Roger Hecklinger and Mr. John B. Calder were assigned the task of drawing up a set of rules

for the organization.

Under plans for the winter, the Curator announced the preparations of an album to contain pictures of field trips, to be presented to the society. It was also suggested that members file negatives of the pictures according to standard catalogue number so that such negatives could be obtained from the central album. The next plan announced was the start of work on the Eocene Period this winter.

A duplicate copy of all material prepared for the Bulletin was requested for the files of the Department. It was also announced that several members of the society had volunteered to arrange for the printing of any original work of outstanding quality and importance produced by the department.

Mr. Hecklinger then presented his suggestions for the exhibits to be placed in the Enoch Pratt Free Library. One case is to be divided into four parts. Part one will contain a definition of what a fossil is and will contain examples of several methods of preservation of fossil material. The second part will contain a geological column, ~~and~~ The third will contain examples of pseudo-fossils. The fourth section is to contain an exhibit comparing ancient life with modern life. Case number two is to be filled entirely with Maryland fossils of all of the periods represented in the state.

October 23, 1933.

The second meeting of the Department of Paleontology of the Natural History Society of Maryland was held at the home of the Curator on Monday, October 23, 1933. The business meeting was called to order by the Curator after the members had spent about two fruitful hours in the laboratory.

The minutes of the previous meeting were read by the acting secretary and were approved as read.

Under old business, the proposed rules for the organization of the Department of Paleontology were discussed. After ^{careful} consideration, the proposed rules were corrected and changed to fit the needs of the Department, and then accepted by the members.

Mr. John B. Calder was elected Secretary-Treasurer upon nomination by Mr. Roger Hecklinger which was seconded by Mr. A. L. Jones.

Dues, which had been fixed at ten cents per month, were collected.

A discussion of preparations for the semi-annual guest evening of the Natural History Society, which will be in charge of the Department of Paleontology was the next order of business. This guest evening is to be held during the month of November. The date at the time of the meeting had not been set.

A suggestion was made that members of the department meet on Monday evenings other than the regular meetings nights in order to speed up the preparation of the Pratt Library Exhibit.

A request for sand for the work bench in the laboratory was made by the Curator.

The secretary was instructed to write to the Funk-Wagnalls Publishing Co. for a copy of the Geological Column which appears in their unabridged dictionary, and to send a letter of thanks to the young men from Washington, D. C., for the assistance which they gave in moving the skull found this summer at Governor's Run.

The meeting was adjourned at 12 o'clock midnight.

November Activities

November 6, 1933

Evening spent in the laboratory. Messrs. G. L. Jones and B. T. Calder finished the sand table. Mr. Hecklinger worked on the coral group. Messrs. E. M. Palmer and J. B. Calder sorted the fossil collection.

November 13, 1933

All members of the Department were present. Work was continued in preparing for the exhibition at the Society's headquarters. Mr. W. Burkhardt of the Dept. of Archaeology also was present and assisted.

November 16, 1933.

Messrs. Hechinger and Palmer worked on the exhibition.

November 18, 1933.

Messrs. E. M. Palmer, John B. Calder, A. L. Jones, B. A. Calder, and H. Burkhardt transferred the fossils to the Society and placed them in the cases. Mr. A. L. Jones worked on the lighting effects.

November 20, 1933.

Final preparations were completed for the semi-annual guest evening. The members of the Department were assisted by Mr. E. B. Fladung, and Mr. H. Burkhardt.

December 4, 1933.

The December business meeting of the Department of Paleontology was called to order by the Curator at ten o'clock on Monday, December 4, 1933, after the members had spent the early part of the evening in the laboratory.

The minutes of the October business meeting were read and approved. There were no minutes of the November meeting as that evening had been used in the preparation of the Society's Headquarters for the Semi-annual Guest Evening.

Notes on events since the October meeting followed.

Mr. A. L. Jones reported that he had made a visit to Calvert Beach, Calvert County, Md. The expenses of the trip were \$2.00

On November 15, 1933, the exhibit was removed from the second floor of the Pratt Library.

The Semiannual Guest Evening of the N. A. S. M. was held on November 24, 1933. The exhibition for this event was prepared and set up by the Department. The illustrated lecture was given jointly by the Curator Ezra M. Palmer and Assistant Curator John B. Calder. The subject of the lecture was "The Miocene of Maryland". Sand for the laboratory table was furnished by the Messrs. Calder.

During the early part of the evening the skull which was found at Governor Run, August 29 & 30, 1933 was placed on the table and partially uncovered.

The following announcements

were made by the Curator:

Provisions have been made for the permanent housing of the study collections. Exhibition material is to be housed separately.

A request was made for tools, brushes, etc., to be used in the laboratory.

Articles are needed for the bulletin.

January 16 has been tentatively set for the talk on the activities of the Department.

A demonstration talk will be given some time in February.

Plans are to get work started on the Eocene during the Christmas holidays.

New Business

The Curator said that a request had been received from the Maryland State Normal School for fossils from the Miocene formations.

Mr. A. L. Jones made a motion that the request be filled from the surplus stock of material which has been collected by the Department. The motion was seconded by Mr. J. B. Calder and passed by the Department.

The department voted to reimburse the Sect. Treas. for the fifty cents which he spent for modeling clay on Nov. 18, 1933. The clay was needed when the exhibit was placed in the Society for the Semi-annual Guest Evening.

The Curator announced that

he had purchased a cabinet that he would turn over to the Department for the storage of its study collection provided the Department would share the cost of the cabinet which was \$2.50. Mr. Palmer reserved the right to buy the Department's share out when adequate housing facilities are furnished by the Society and take over the cabinet.

Motion was passed by the Department to accept Mr. Palmer's proposition and the Treasurer was instructed to pay him \$1.25, one-half the cost of the cabinet.

Mr. A. L. Jones moved that a representative collection of Paleontological specimens be kept in the cases of at the Society. The motion was seconded by Mr. B. A. Calder and passed.

Motion was made to adjourn at 11:05 P.M.

January 8, 1934

Members present: E. M. Palmer,
J. B. Calder, A. L. Jones, B. A. Calder, and
R. Hecklinger.

Minutes of the previous meeting
were read and corrected.

No business was transacted.

E. M. Palmer, J. B. Calder and
A. L. Jones worked together to complete
the record of events prior to the organiza-
tion of the department of
Paleontology.

In the laboratory, B. A. Calder
worked on the skull while
R. Hecklinger worked on the collection
of Miocene fossils to be presented to
the Maryland State Normal School.

Notes:

The collection for the M.S.N.S.
consists of twenty-six specimens. It
is to be delivered to Miss Minnie V.

January 8, 1934.

Members present: E. M. Palmer,
J. B. Calder, A. L. Jones, B. A. Calder, and
R. Hecklinger.

Minutes of the previous meeting
were read and corrected.

No business was transacted.

E. M. Palmer, J. B. Calder and
A. L. Jones worked together to complete
the record of events prior to the organ-
ization of the department of
Paleontology.

In the laboratory, B. A. Calder
worked on the skull while
R. Hecklinger worked on the collection
of Miocene fossils to be presented to
the Maryland State Normal School.

Notes:

The collection for the M.S.N.S.
consists of twenty-six specimens. It
is to be delivered to Miss Minnie V.

Medwedoff. A list of the fossils included
in the collection is to be filed by the secretary.

An exhibition of vertebrate remains
was installed in the Pratt Library on
December 29, 1933.

Dr. L. Jones donated a hand made tool
for use in cleaning specimens and one half
pint of Du Pont Cement.

R. Hecklinger suggested that pictures be taken before further work is done on the skull.

The meeting was adjourned at 11:15 P.M.

January 15, 1934

E. M. Palmer and J. B. Calder made pictures of the whale skull in the laboratory.

January 22, 1934.

E. B. Pladung, E. M. Palmer, and J. B. Calder were present.

Mr. Pladung brought his camera to take pictures of work being done on the skull.

Notes:

Mr. Milton Oler made the

department a present of casts
of the mastodon tooth found
by R. Hecklinger and his brother
in the Miocene at Governor
Run. A letter of thanks was
sent to the donor.

The Curator has requested
Mr. Hecklinger to prepare an article
about the tooth for the bulletin.

Letters of appreciation for the
collection of fossils presented to
the M. S. N. S. at Powson
were received from the principal
Miss Lida Lee Tall and Miss
Minnie V. Medwedeff.

February 12, 1934.

E. M. Palmer, Robt. Wheeler,
and A. L. Jones were present
and worked in the laboratory.

March 12, 1934.

First meeting of the fiscal year
1934-1935.

Members present: E. M. Palmer,
J. B. Calder, Robt. Wheeler. A. L. Jones
phoned that he was unable to attend
because of illness.

The following information was
received from R. Hecklinger in regard
to the mastadon tooth.

Found Aug. 1929 by Guy E. Hecklinger.
Hindermost molar of young adult
which Dr. Gilmore of the National Museum
identified as *Gomphotherium Obscurum* ^{Leidy}.

Dr. Gidley also of National Museum
believed it to be an unidentified specimen.

Robt. Wheeler was made a member of
the department, to be enrolled, as of
March 4, 1934.

New Business:

The financial report for the year 1933-1934 was submitted and approved.

A rough draft of the annual report of the department for the year 1933-1934 was read by the curator and approved by the department.

Notes:

E. Boyd Morrow, Head Master, Gilman School for Boys sent a request for a collection of Miocene material.

Lecture "In Quest of Natural History" was given by E. M. Palmer on Friday, March 2 at Gilman School for Boys. Pieces of coral and shark's teeth were given to the boys as souvenirs.

Lecture March 4, 1934. "Maryland Fossils" was given by Robt. R. Hecker to the Young People's Guild of the First Unitarian Church.

The department is indebted to
Mr. Kingle for making 21 lantern
slides. Materials were supplied by
E. M. Palmer

The Meeting was adjourned at
9:30 P.M.

June 4, 1934.

Members present: E. M. Palmer, J. B. Calder, G. L. Jones, and B. G. Calder.

The minutes of the January 22^d meeting were read and approved.

Mr. Oscar Helm and Mr. Wm. Lehr were made members of the department.

Future work of the department was outlined and assignments were made by the Curator.

Field work is to be done with a view toward lectures and articles. Changes in contour should be noted, and complete bivalves should be collected whenever possible.

Mr. Helm volunteered to work on mandible remains.

Mr. Lehr was requested to write to Miss Mary E. Rathbun of the National Museum for information concerning the external structure of callicetes. Mr. Lehr

suggested sending a diagram to Miss Rathbun requesting her to insert the names of the parts.

The Curator suggested writing a comparison of the pectens of the Choptank R. with those of the Western Shore as the subject of an article by J. B. Calder.

It was suggested that Mr. Lehr work on the so-called worm castings of the Miocene. This he agreed to do.

Arrangements were made for a trip to Calvert Cliffs on June 16. Absent members are to be notified by mail.

J. B. Calder reported that he visited the exposure of Choptank formation at Barker's Landing on the Choptank R. on May 19, 1934. A number of photographs were taken and some fossils collected.

Meeting adjourned to the laboratory
at 9:50 P.M.

Fossils were filed in the
cabinet provided for the study
collection. They were also catalogued
so that any given species may
easily be located from the card
catalogue.

The meeting was adjourned
at 12:20.

June 18, 1934.

Members present were E. M. Palmer, Oscar Helm and B. Calder.

The minutes of the previous meeting were read and corrected.

Mr. Helm contributed a geological atlas the Patuxent Folio, U. S. G. S.

Notes on the excursion to Calvert Cliffs, June 16, 1934 are as follows: The first location visited was Calvert Beach. The ledge to the south which had been so prominent before the storm of August 23, 1933, was entirely eroded away. So much of the cliff had been torn away by this storm that a roadway leading from the beach parallel to the face of the cliff was made impassable. The exposure was covered with debris in many places. The predominant fossil was *Melina mapilata*. About one-quarter mile of the cliff to the south was

examined.

The cliffs for about one mile to the north of the road were examined. Much debris from above made the observations in the lower layers of fossils impossible.

Isocardias and areas were the predominating fossils in the blocks of gray clay which were broken off by the August 29th storm.

Governor's Run

The cliffs to the north of Governor's Run to Parker's Creek were examined.

Among the fossils collected were the atlas of a whale and a tail vertebra were taken from the cliffs at the point where the first constantly running stream from north of the Howard Beach Rd forms a ten foot falls to the beach. The remains were taken about four feet above the beach.

About a quarter mile north of the above mentioned falls, a number of well preserved ribs were collected.

Crocodil remains consisting of two vertebrae and four scutes were taken about three and one half feet above the beach in the second cliff south of the marsh at Parker's Creek just north of the first ravine.

Those present on the trip were: E. M. Palmer, A. L. Jones, J. B. Balder, B. L. Jones, O. Nelson, Wm. L. L. and A. Wheeler. Walter E. Price and Chas. Ostrander of the Dept. of Mineralogy were guests of the Dept. of Paleontology.

A laboratory table is being built for the department at a cost of about \$250.

The major part of the evening was spent in the laboratory cleaning material collected June 16, 1934.

Meeting adjourned at 11:15 P.M.

July 2, 1934

The members present were:
E. M. Palmer, J. B. Calder, A. L. Jones,
B. A. Calder, and O. Nelson.

The minutes of the previous meeting were read and approved.

The Secretary-Treasurer was instructed to purchase 25¢ worth of gum arabic.

E. M. Palmer reported visiting several fossil localities on the Eastern Shore.

1. Summit Bridge (Cretaceous)
Area one and one-half miles south of bridge.

Fossils: turritella, polynices, oval and teeth (chuck).

2. Barker's Landing, Choptank R
(Choptank Formation - Miocene)

Type locality of Miocene
Fossils: North and typical Choptank material.

3. Greenboro

No workable fossils

Marl noted at water's edge
along Chestnut R. near bridge
northwest from town

4. Federalsburg

No exposure found.

Cultural geography of several
places was noted.

A discussion of possible camp
sites for the 1934 Southern Maryland
Palaeontological Expedition followed.

The Secretary - Treasurer was
instructed to reimburse Mr. Jones for
the cost of the materials used in
building the laboratory table, \$2.70. He
was also instructed to purchase
oilcloth for the table.

In the laboratory, work was
continued on the material collected June 16.

The laboratory table was assembled
and set in place.

July 16

July 23
See page
following

September 17, 1934.

Meeting of Sept. 17, 1934 was called
at the home of the Curator.

The minutes of the previous
meeting were read and approved.

Trips taken since the last
meeting were recorded. The are as
follows:

July 9 & 10 Governor's Run. A whale's
skull, ribs and vertebrae which had
been reported by Herbert C. Moore was
excavated and brought to Baltimore.

Those present on the trip July 9 were:

H. C. Moore, H. Burkhardt, B. G. Calder, J. B. Calder
and E. E. Calder, a guest. Messrs. Moore,

H. C. and J. B. Calder completed the work on
July 10.

July 18 B. G. Calder and J. B. Calder visited the
Cretaceous exposures in quarries near Mirkshill, Md.

July 19 B. G. & J. B. Calder worked the Cretaceous
exposures in the Chesapeake R.R. cut at

Central Ave and the District of Columbia Ave. A number of fossils were collected.

July 24, 25 & 26 J. B. Calder collected Cretaceous plant remains at Sullivan's Cove while visiting Camp Linstead.

July 30 - Aug. 15 B. G. Calder and J. B. Calder visited Tertiary exposures in the vicinity of Charleston, S. C.

Aug. E. M. Palmer with

worked the Cretaceous at Seat Pleasant, Eocene at Upper and Lower Marlboro and the Miocene at Chesapeake Beach, Md.

Aug. 22 - Sept. 1 B. G. Calder and J. B. Calder worked the Miocene and Pliocene while camping at Langley's Bluff, St. Mary's Co.

Aug. 28-31 E. M. Palmer and A. L. Jones visited Hancock, Eakles Mills and Heaverton, Md. where they worked the Romney shale, Oriskany sandstone and Rome town limestone.

Two informal meetings recorded:

July 16, 1934

E. M. Palmer and J. B. Calder
worked in the laboratory.

July 23, 1934.

E. M. Palmer, O. Hill and
B. A. Calder worked in laboratory.

The Treasurer reported that he had
purchased oilcloth for the laboratory
table for fifty-four cents.

A request from the public
library at Cumberland, Md. for
exhibition material was suggested
as a project for the department.

The Curator requested
Messrs. Wm. Lehr and J. B. Calder to
assist Robt. Wheeler in preparing
material for the annual exhibition
of the Junior Division.

The Curator urged members to write for the bulletin.

The following staff was submitted by the Curator for approval:

E. M. Palmer, Curator

J. B. Calder, B.S., Asst. Curator

A. L. Jones, Asst. Curator

B. A. Calder, Staff Asst.

O. L. Helm, ^{A.B.} Assoc. in Fossil Mammals

Wm. E. Lehr, B.S. } associates in

Roger S. Hecklinger } Fossil Invertebrates

Robt. Wheeler }

Mr. Lehr moved that the staff be approved as read.

Record was made of a collection of fossils from { Trenton Falls, N.Y.
Stegou Lake, N.Y. (Silurian and Devonian). These fossils were presented by Mr. Herbert C. Moore.

There being no further business the meeting was adjourned and the members present: Messrs Palmer, J. B. and B. A. Calder, Helm, Lehr, Hecklinger and Wheeler withdrew to the laboratory.

March 2, 1935.

First meeting of the fiscal year 1935-1936 was held at the new headquarters of the Society.

The following members were present Messrs. E. M. Palmer, O. Kelm, H. Jones, Wm. Lehr, J. B. Calder, Mr. E. B. Bladung, President of the Society was present for part of the meeting.

The minutes of the previous meeting were read and approved.

The Curator then explained the house rules and the new rules for the organization of the staff of each department. — * Each department is to consist of a Curator, an Assistant Curator, Associate Curators and Staff Assistants.

The Secretary Treasurer made a report of the financial condition of the department. Dues were collected.

A discussion of possible ways of

raising funds for expenditures in the new quarters followed. Mr. Lehr suggested that the least troublesome way would be to assess each member.

Mr. Lehr contributed \$5⁰⁰ for the Department's share of the cost of the laboratory table and linoleum for the table top and floor runners.

Motion by Mr. Lehr that money be appropriated from the treasurer for the building of a new high table for a ~~new~~ the s. w. corner of the laboratory. Motion carried.

The Secretary was instructed to obtain prices on a steel cabinet for the laboratory.

It was agreed that the table now being used in Ebra's cellar, ^{is} to be set up in the cellar of the new headquarters.

Motion to draw money from the treasury to pay for construction of shelves in the hall cupboard was made by Mr. Helm and seconded by Mr. Lehr. Motion carried.

Mr. Lick suggested that estimates be obtained regarding costs of shelving and cabinets so that total assessment for outfitting the laboratory can be determined.

The Curator made a request for work for the new laboratory.

The main item of the Curator's outline of work for the year was the announcement of a plan to ^{spend} have about two weeks in Charles County near Port Tobacco. This location was chosen because of its proximity to the Eocene exposures of Maryland. Tentative time for this expedition was set for the last two weeks in August. The Curator expressed the hope that enough funds could be raised so that a house could be rented for the expedition.

The Curator requested the Secretary to assist in preparing the report for the annual meeting. The meeting was adjourned at 5 p.m.

June 10, 1935

The meeting was called to order by the Curator.

The minutes of the previous meeting were read and approved.

The following members were present: Elva M. Palmer, A. L. Jones, R. Wheeler, B. A. Calder and J. B. Calder.

Mr. Palmer announced that the laboratory equipment had been installed. The costs of equipping the laboratory were approved by the members.

Mr. Wheeler made a motion that an assessment of (\$3.00) three dollars be levied upon each member in order that the costs of equipping the laboratory might be paid. Mr. Lehr to be credited with his contribution of March 2, 1935. The motion was seconded by Mr. B. A. Calder and passed.

Mr. Palmer announced that Dr. Howard G. Kelly had contributed \$50⁰⁰ fifty dollars toward the Southern Maryland Paleontological Expedition of 1935.

The following plans for this summer's expedition were announced:

Time - three weeks

Outlay: \$20⁰⁰ for shack of 2 or 3 rooms

30⁰⁰ for other expenses

The above to be paid from

Dr. Kelly's contribution

Deposit: \$10 from each member for three weeks in advance.

Help in kitchen:

Two people to be assigned to keep books.

The program for laboratory work announced was as follows:

Arrangement of fossils

Preparation of exhibition collections

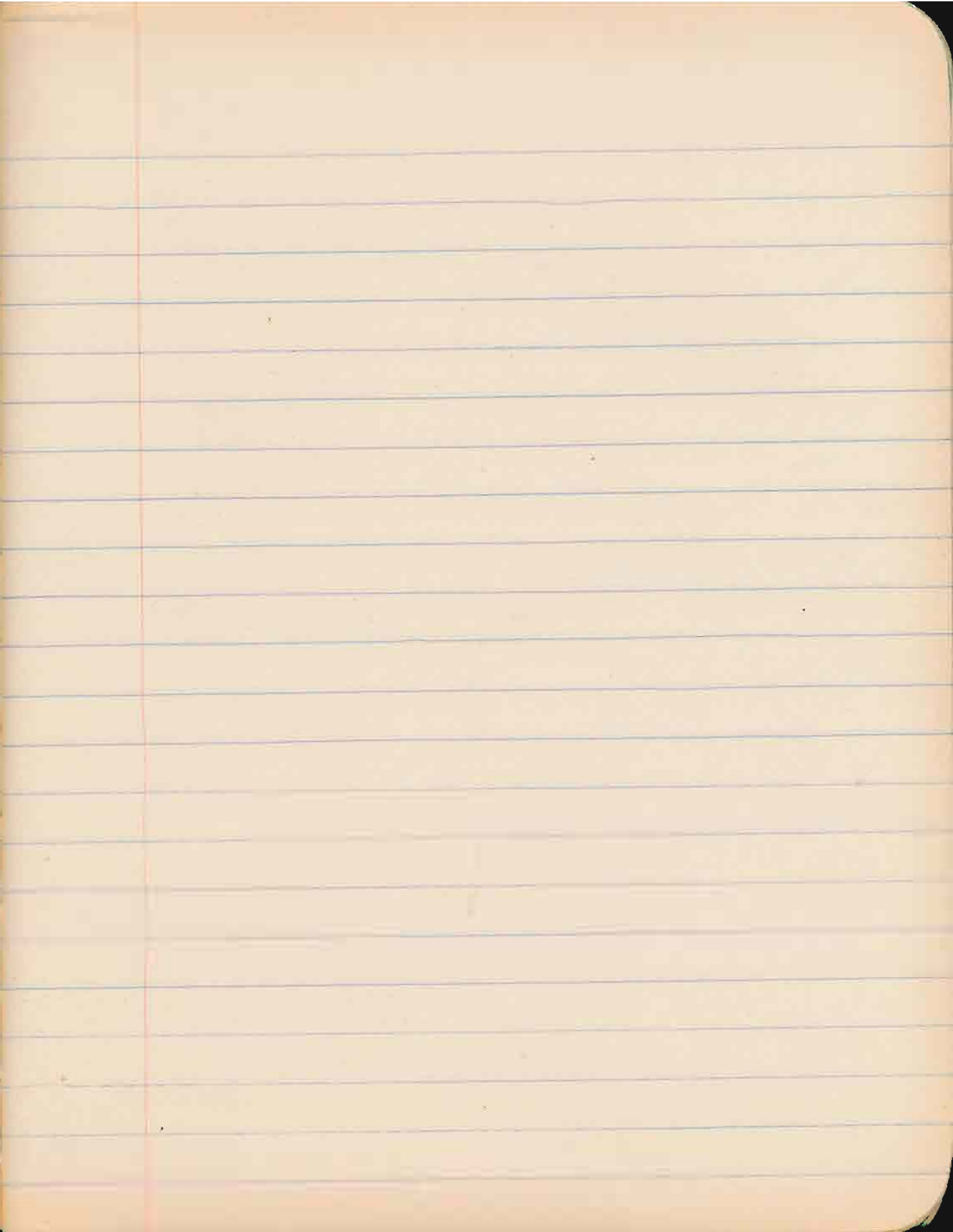
Preparation of gift collections

Work on whale skull

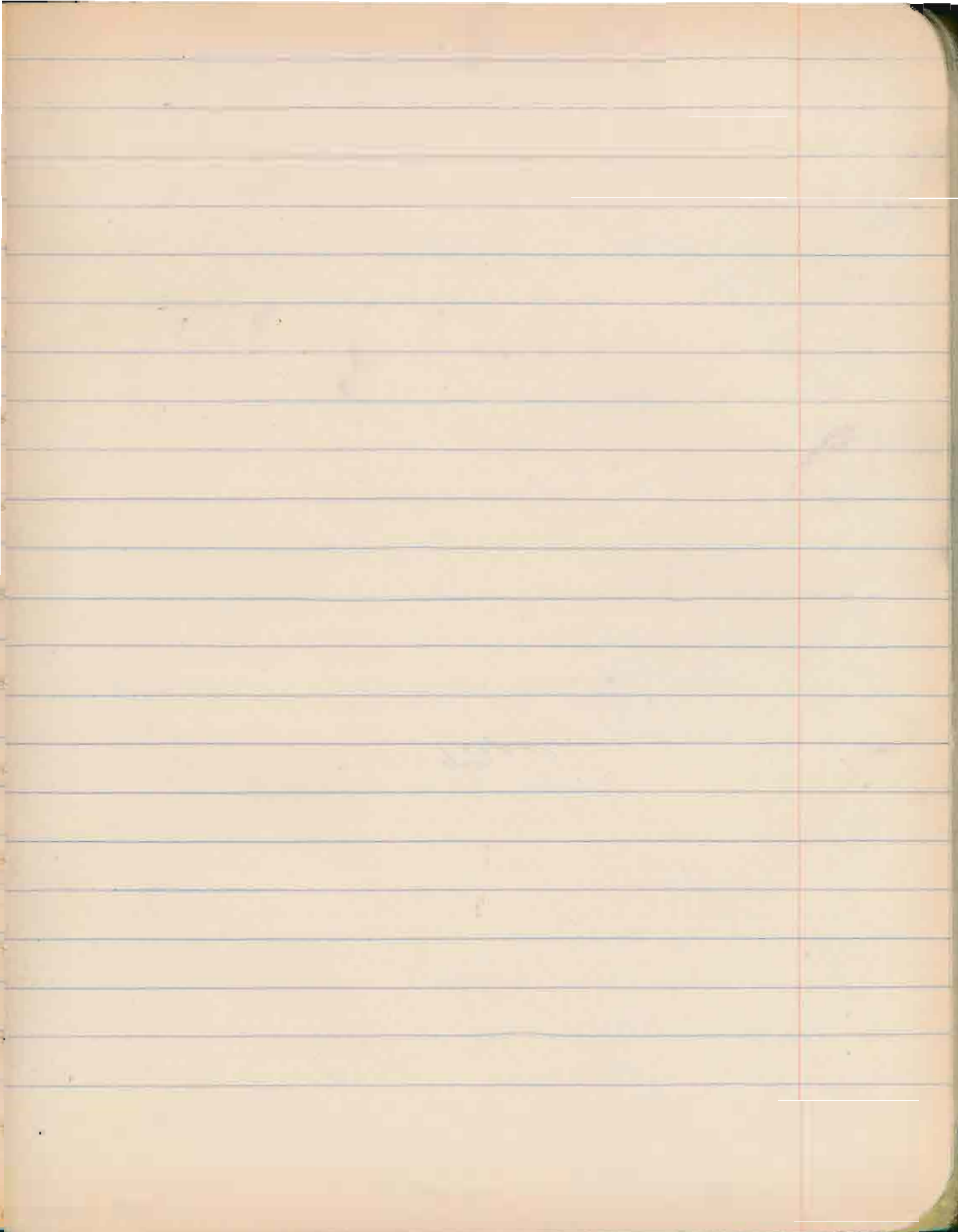
A field trip for Associate
Members was planned for June 22, 1935

Motion for adjournment was
made at 11:20 P.M.

Respectfully submitted
John P. Calder, Sec.



Trips



April 23, 1933

Lyon's Creek, Parker's Creek,
Governor's Run, Chesapeake Beach,
Lyon's Wharf, Md.

Benjamin A. Calder and John
B. Calder visited these localities for
the purpose of obtaining photographs

A contact between the Eocene
and the Miocene was located along a
tributary of Lyon's Creek.

April 29, 1933.

Governor's Run, Md.

E. M. Palmer, A. L. Jones, and
J. B. Calder mined and worked the
Choptank and Calvert formations of
the Miocene to the south and north
of the settlement

Large numbers of sand dollar
plates were found south of the town
along the strand line.

A pair of mandibles of
cetotherium about five feet long were
taken from the cliff north of the town.

May 5, 1933.

Washington, D. C.

A. L. Jones made a trip to the
National Museum at Washington, D. C.
for the purpose of obtaining information
from Dr. Kellog concerning the mandible
collected on April 29

May 30, 1933.

Sharpsburg and Eckles Mills, Md.

A. L. Jones visited these localities
in his survey of the Cambrian

No exposures were located

Ira B. Sniveley was contacted
at Eckles Mills. He furnished information
about the location of a B & O. R. R. quarry

which is one half mile N.W. of Eckles' Mills.

June 22, 1933.

Plum Point Wharf and Governor's Run, Md.

E. M. Palmer visited these localities.

All exposures at both places were entirely covered by silt. Few mollusks and possibly a new species of coral were obtained.

June 23, 1933.

Washington, D. C.

E. M. Palmer and J. B. Calder called at the home of Dr. Kellogg on H. 29th St. off Military Rd. for the purpose of having the large whale skull identified. *Cetotherium crassangulum* Cope.

July 25, 26 & 27, 1933

1. Brush Creek Coal Seam
N.W. of Barreville, Mt. - site of old Brush
Creek Brick Works. (Pennsylvanian?)
 2. Big Savage Mt. non-fossiliferous
Mississippian sandstone at top
 3. Elkhart, Md. Slate dumps at
Consolidated Coal Co. Mine No. 10
Permian, Dunkard series. Leaf prints
and fern prints.
Mine foreman, Mr. Wolf
- Trip made by A. L. Jones

July 28, 1933.

- Summit Bridge, Mt.
- A. L. Jones collected Cretaceous
fossils along the banks of the C & O
Canal
- Fish vertebra found in the
Raritan (?) formation.

July 30, 1933

Parker's Creek and Cove Pt., Md.

E. M. Palmer, E. H. Palmer,

Bryant Mathers and J. B. Calder visited these localities for the purpose of selecting a camp site for the Southern Maryland Paleontological Expedition of 1933. (see following pages for notes on the expedition)

August 18, 1933.

A. L. Jones and W. H. Coleman met the Southern Maryland Paleontological Expedition at Calvert Beach, Md.

Choptank Formation of the Miocene Epoch was worked.

September 1, 1933

Paleontological Expedition

to

Southern Maryland

August 8-23, 1934.

August 8, 1934.

Benj. A. Calder, Eva M. Palmer,
and John B. Calder started for Calvert
County, Md.

The purpose of the expedition
was to extend the survey of the Miocene
Epoch which was started in 1932.

Attempts to find a suitable
camp at Parker's Creek, & Governor's
Run were unsuccessful. The night
was spent at the home of James
Rogers at Boome's Island, Md.

August 9, 1934.

Camp established on the
Briscoe Estate at Parker's Wharf, Md.

August 10, 1933.

Governor's Run

Met Dr. Kellogg of the National
Museum, Washington, D.C. and
Dr. Cozen of California

Found whale scapula
N. of Governor's Run.

Located Tom Brown's Mill
which had been reported to be a fossil
locality by the natives. Only one
cast in sandstone found.

August 11, 1933.

Spent day in camp

August 12, 1933.

Little Cove Pt. south toward
Drum Pt. Worked and photographed
the St. Mary's formation. Extremely
high cliffs.

Casts and impressions of
Xenohelix

Ledges of ferruginous
sandstone with numerous impressions
Turritella plebia predominating form.

Flag Pond

Walked south from Woolford's
property as far as Idlawyde

Beach covered with water.

Largest profusion of fossils
observed.

Bone fragments noted

August 13, 1933. - Sunday
Spent day in camp.

August 14, 1933.

Rain kept us in camp in
the morning

Afternoon clear. Good exposure
of Choptank at base of the bluff at
the mouth of Ben's Creek

Pleistocene gravel and

cross-bedded sand in bluff.

August 15, 1933.

Plum Point Beach.

Walked north to one-half mile above Camp Roosevelt.

Obtained good collection of small shells in front of Tavern.

Good collection of shark and porpoise teeth and occasional teleost remains.

August 16, 1933.

Plum Point Wharf

Walked south to third gully.

Excellent collection of shells made. Exposures in fine condition for paleontological work.

Randle's Cliff

Walked south to Camp Roosevelt. Obtained a large number

of teeth and remains of caudial spine from the cliff.

August 17, 1933.

Water too high to permit work at Darc's Wharf.

Mackall's Wharf - mouth of St. Leonard's Creek

Indurated ledge of Choptank formation containing material similar to that found south of Drum Cliff.

Obtained specimens of *Pecten jeffersonius*

Also found peculiar encrustation. Unidentified as yet.

August 18, 1933.

Calvert Beach

Joined by A. L. Jones and W. W. Coleman

Worked south from road in upper layer of Choptank material as far as Flag Pond.

Abundant remains, especially *Astrakelia palmata* and *Melina manillata*.

Ciffs were high and the dip of the beds was quite noticeable.

Walked north of road to within one mile of Governor's Run. Found numerous *isocardia* and fragments of crab claws.

August 19, 1933.

Balanced books in preparation for moving to St. Mary's County. Took clothes to laundry. Were invited to a beach supper by the Briscoe's.

Worked south from road in
upper layer of Choptank material
as far as Flag Pond.

Abundant remains, especially
Astrakella palmata and *Melina
maillata*

Cliffs were high and the
dip of the beds was quite
noticeable.

Walked north of road
to within one mile of Governor's
Run. Found numerous *isocardia*
and fragments of crab claws.

August 19, 1933.

Balanced books in preparation
for moving to St. Mary's County.
Took clothes to laundry. Were
invited to a beach supper by the
Briscoe's.

August 20, 1933

Rain

August 21, 1933.

Governor's Run

Solomon's Island.

Tide very high at both places

August 22, 1933

Started packing for our
move to St. Mary's County.

Made a survey from camp
along the bank of Ben's Creek.

Walked one-half mile
south of Parker's Wharf.

August 23, 1933.

Rain and strong N.E. wind.

Broke camp and returned home
in historic storm

Arrived in Baltimore at 3:00 P.M.

August 29, 1933.

Governor's Run, Md.

B. A. Calder, E. M. Palmer,
E. N. Palmer and J. B. Calder worked
north toward Parker's Creek.

The entire face of the cliffs
were altered by the storm of
August 23.

A large number of bone
remains were found in good condition

1. Excellent femur of Miocene bird (?)
2. Mylobatis spine (caudial)
3. Mandible of whalebone whale 4½ ft.
4. Tympanic lobe.
5. Whale skull six ft. long.

The skull lay horizontally in the
cliff 2½' to 3' above the beach level about
100 yd. south of ravine

Both condyles seemed to be
intact as well as the left optic pro-
jection and the tympanic lobes.

Called Doc. Bladung for help.

Doc and G. Klinge arrived at
Governor's Run at 8:35 P.M.

All worked until after midnight
to get the skull out of the cliff down on
the beach.

Doc, Gil, E. M. Palmer, and
E. H. Palmer left Governor's Run at
1:30 A.M. Arrived in Baltimore at 3:15 A.M.

Benj. A. Calder and J. B. Calder
remained on the beach all night,
Completed preparation of the skull for
moving in the morning.

August 30, 1933.

E. M. Palmer and E. H. Palmer
returned at 10:00 A.M.

The assistance of Bob Webster,
Lyman Mc Aboq, and Barney Anderson,
all of Washington, D.C. was solicited for
moving the skull down the beach. These
young men also provided a boat.

Permission to store the skull

on the Ireland property, was secured
thru the kindness of Mr. J. L. Keems.

September 1, 1933.

A. L. Jones, Pallet Jones and
Benj. A. Calder went to Governor's Run
to wrap the whale skull and place
a property sign on it.

September 4, 1933.

Mitchel Kilpert, Ezra M.
Palmer and John B. Calder made a
trip to Governor's run to bring the
whale skull to Baltimore. The
truck used for this was furnished
thru the kindness of Mitchel Kilpert.

Moving men were hired to
place the skull in the laboratory.

John B. Calder spent the afternoon
at Calvert Beach. The gray fossiliferous
clay to the north of the road had broken
off in large blocks during the storm
of August 23.

November 5, 1933.

A. L. Jones made a trip to
Calvert Beach.

Eocene Formations

Aquia Formation

PISCATAWAY MEMBER

Aquia Creek, Va.

Ravine $\frac{3}{4}$ mi. East of Oxen Hill, P.G. Co.

R.R. cut near Seat Pleasant, R. Co.

PASPOYANSA MEMBER

East of bridge at Upper Marlboro,

Bank of Chester River opposite

Rolphs Landing, K. Co.

NANJEMOY FORMATION

PATAPAGO MEMBER

Ravine one mile south of

Thrift, P.G. Co.

Head of Nanjemoy Creek Ch. Co.

$2\frac{1}{2}$ mi. above Topes Creek Ch. Co.

Bluff at Woodstock Va.

Woodstock MEMBER

Bluff at Woodstock Va.

Trips

1. To Aquia Creek, Va.
Collecting from Piscataway Member.

2. To Upper Marlboro P.G. Co.
Collecting from Paspatansa Member.
To Seat Pleasant & Oxen Hill, P.G. Co.
Collecting from Piscataway Member.

3. Ralphs Landing R. Co.
Collecting from Paspatansa Member.

4. Thrift P.G. Co.
Collecting from Patapaco Member.
Collecting can be done at
several places in this section.

5. Manjemo & Popes Creek, Charles Co.
Collecting from Patapaco Member.

6. Woodstock Va.
Collecting from Patapaco &
Woodstock Members.

BIBLIOGRAPHY

BAILEY, J. W. - On the Origin of Greensand, and its formation in the oceans of the present epoch
 Amer. Jour. Sci., 2nd ser., Vol. xxii, 1856, p. 250-254
 Proc. East. Soc. Nat. Hist., Vol. v, pp. 364-368

CLARK, W. B. - Expeditions to Southern Maryland.
 Johns Hopkins Univ. Circ. Vol. viii, 1888, pp. 65-67
 " " " " Vol. ix, 1890, pp. 69-71
 " " " " Vol. x, 1891, pp. 105-109

CLARK, W. B. - Correlation Papers - Eocene
 Bull. 83, U.S. Geol. Survey, 1891, pp. 43-46, 80, 81, 85-87

— — The Potomac River Section of The Middle Atlantic Coast Eocene.
 Am. Jour. Sci. 4th Ser. Vol. i, 1896, pp. 365-374

— — The Eocene Deposits of the Middle Atlantic Slope in Del., Md., & Va.
 Bull. 141, U.S. Geol. Survey, 1896, 167 pp. 40 plates

UHLER, T. R. - Note on Eocene & Cretaceous
 Trans. Md. Acad. of Sci. Vol. 1, 1888, PP 10-32
 " " " " " " Vol. 1, 1889-1890, P.P. 45-72
 " " " " " " Vol. 1, 1890, P.P. 97-104

